

ASPÖCK[®]
S T E M S

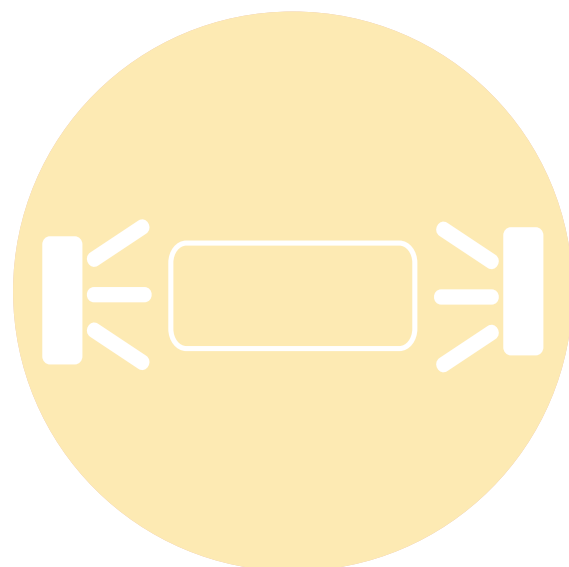


KENNZEICHENLEUCHE

Unsere Lichtlösungen fördern Sicherheit und Sichtbarkeit gleichermaßen. Unterschiedliche Ausführungen und Anbaumöglichkeiten begünstigen ihre Vielseitigkeit. Verschiedene Anschlüsse verbinden die Leuchten einfach und schnell mit dem vorhandenen Kabelsystem. Einfachste Montage ist daher sichergestellt.

NUMBER PLATE LAMP

Our lighting solutions encourage safety and visibility in equal measure. Different designs and installation options promote their versatility. Various connections connect the luminaires easily and quickly to the existing cable system. Simplest mounting is therefore ensured.





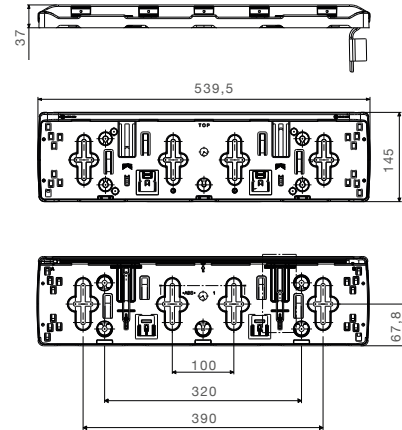
NUMBER PLATE HOLDER FLEXLED

ADR Zone 2

IP 54



Produktinformation
Product information



Kennzeichenlicht
Number plate light

Kennzeichen-
leuchte
Number Plate
Lamp


BEST. NR					ZUSATZ	ANSCHLUSS
PART NO					ADD ON	CONNECTOR
36-3704-101	1/-	LED	24V			offenes Ende open End 0,50 m
36-3704-141	1/-	LED	24V			P&R 0,50 m
36-3704-131	1/-	LED	24V			2 pol. ASS2 2 pin ASS2 0,50 m
36-3704-151	1/-	LED	24V			2 pol. Superseal 2 pin Superseal 0,50 m
36-3704-191	1/-	LED	24V			offenes Ende open End 1,50 m
36-3704-111	1/-	LED	24V			P&R 1,50 m
36-3704-171	1/-	LED	24V			2 pol. ASS2 2 pin ASS2 1,50 m
36-3704-181	1/-	LED	24V			2 pol. Superseal 2 pin Superseal 1,50 m



NUMBER PLATE HOLDER FLEXLED

ZUBEHÖR / ACCESSORIES



- 1** Montage-Clip |
Mounting clip
..... 15-5300-424 





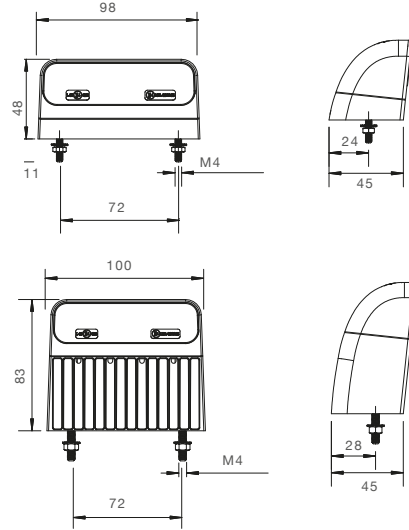
REGPOINT II LED

ADR Zone 2

IP 54



Produktinformation
Product information



Kennzeichenlicht
Number plate light

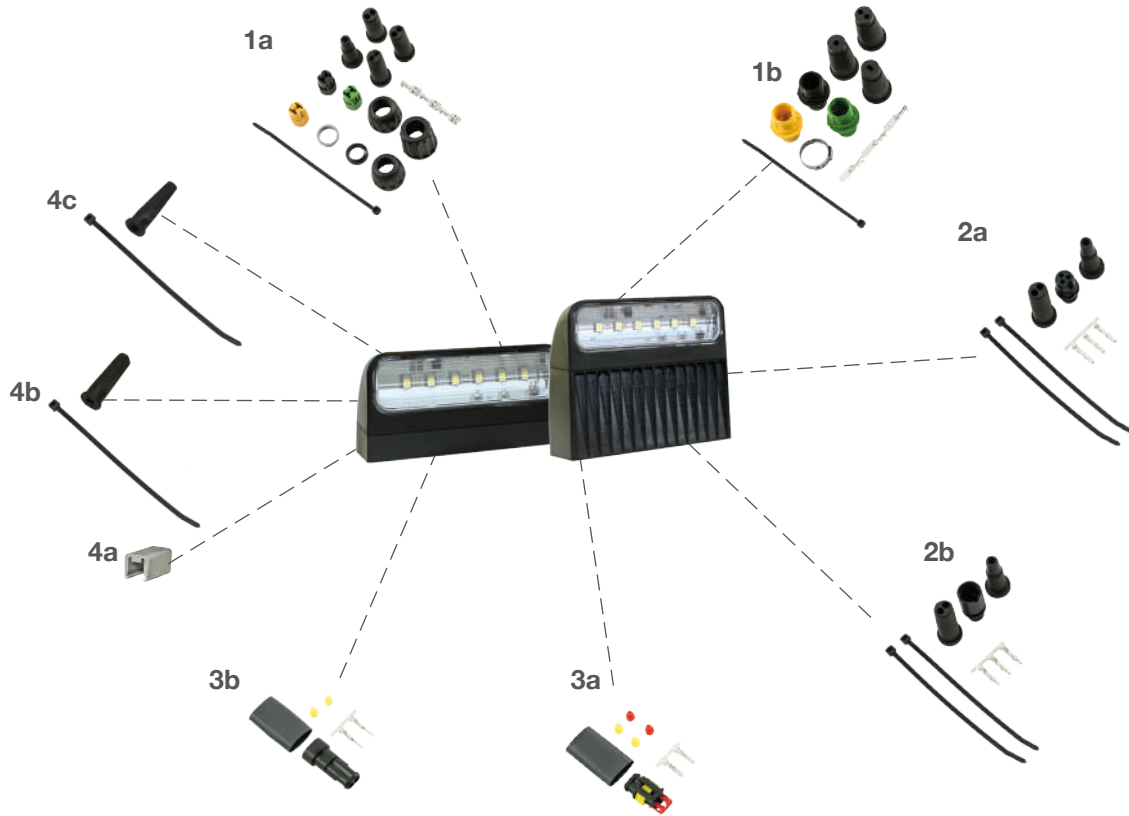
Kennzeichen-
leuchte
Number Plate
Lamp

BEST. NR					ZUSATZ	ANSCHLUSS
PART NO					ADD ON	CONNECTOR
36-3804-004	1/50	LED	12V 24V			P&R 0,50 m
36-3804-014	1/25	LED	12V 24V			P&R 2,00 m
36-3806-004	1/-	LED	12V 24V			2 pol. ASS2 0,50 m
36-3805-004	1/-	LED	12V 24V			2 pol. ASS2 2,00 m
36-3807-004	1/-	LED	12V 24V			2 pol. Superseal 0,50 m
36-3810-004	1/-	LED	12V 24V			3 pol. ASS3 0,50 m
36-3864-004	1/-	LED	12V 24V		für Einzelbau for single mounting	P&R 0,50 m
36-3864-014	1/-	LED	12V 24V		für Einzelbau for single mounting	P&R 2,00 m
36-3867-014	1/-	LED	12V 24V		für Einzelbau for single mounting	2 pol. ASS2 0,50 m
36-3867-024	1/-	LED	12V 24V		für Einzelbau for single mounting	2 pol. ASS2 2,00 m
36-3865-004	1/-	LED	12V 24V		für Einzelbau for single mounting	3 pol. ASS3 0,50 m
36-3867-004	1/-	LED	12V 24V		für Einzelbau for single mounting	2 pol. Superseal 0,50 m



REGPOINT II LED

ZUBEHÖR / ACCESSORIES



1 ASS1 & ASS2 Verbinder | ASS1 & ASS2 connector

- (a) 2 pol. weiblich
2 pin female 13-5626-401
- (b) 2 pol. männlich
2 pin male 13-5625-991

2 ASS3 Verbinder | ASS3 connector

- (a) 3 pol. weiblich
3 pin female 13-0322-281
- (b) 3 pol. männlich
3 pin male 13-0332-281

3 Superseal Verbinder | Superseal connector

- (a) 2 pol. weiblich
2 pin female 15-7002-044
- (b) 2 pol. männlich
2 pin male 15-7002-054

4 für P&R Verbinder | for P&R connector

- (a) Verschlusskappen
caps 15-5971-014
- (b) Endkappen rund
end caps round 15-5983-024
- (c) Endkappen eckig
end caps square 15-5729-014

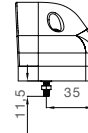
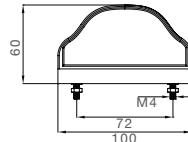
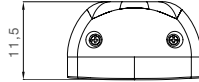




REGPOINT LED

ADR
Zone 2

IP 54



Kennzeichenlicht
Number plate light

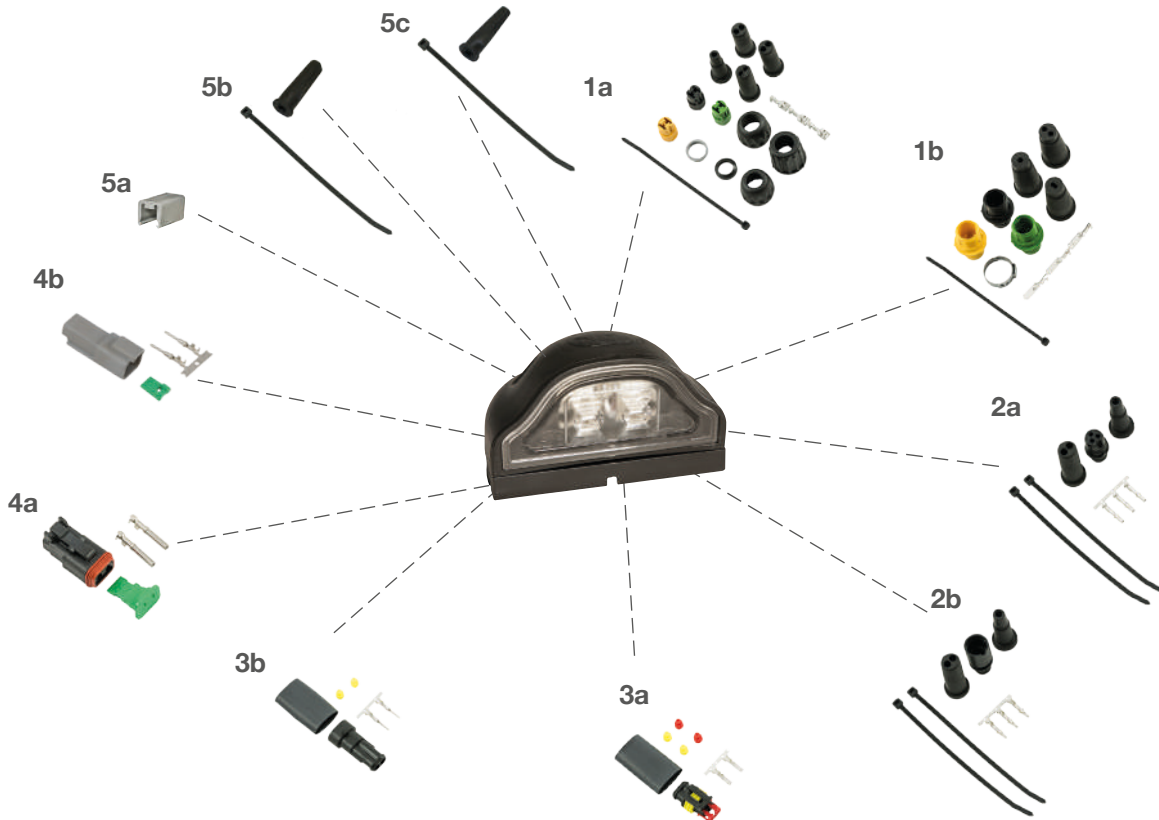
Kennzeichen-
leuchte
Number Plate
Lamp

BEST. NR				ZUSATZ	ANSCHLUSS
PART NO				ADD ON	CONNECTOR
36-3607-004	1/-	LED	24V		2 pol. ASS2 2 pin ASS2 ♀ 0,50 m
36-3607-034	1/50	LED	24V		2 pol. ASS2 2 pin ASS2 ♀ 0,80 m
36-3607-014	1/30	LED	24V		2 pol. ASS2 2 pin ASS2 ♀ 1,00 m
36-3607-024	1/-	LED	24V		2 pol. ASS2 2 pin ASS2 ♀ 3,50 m
36-3607-074	1/-	LED	24V		3 pol. ASS3 3 pin ASS3 ♀ 0,50 m
36-3607-094	1/-	LED	24V		3 pol. ASS3 3 pin ASS3 ♀ 1,00 m
36-3690-004	1/-	LED	24V		2 pol. AFK plus lear 2 pin AFK plus lear 0,50 m
36-3690-034	1/-	LED	24V		2 pol. Deutsch 2 pin Deutsch ♂ 0,17 m
36-3600-044	1/-	LED	24V		2 pol. Superseal 2 pin Superseal ♀ 0,25 m
36-3690-014	1/-	LED	24V		2 pol. Superseal 2 pin Superseal ♂ 3,50 m
36-3690-024	1/-	LED	24V		2 pol. Superseal 2 pin Superseal ♀ 1,20 m
36-3690-044	1/-	LED	24V		2 pol. Superseal 2 pin Superseal ♂ 0,15 m
36-3600-004	1/-	LED	24V		offenes Ende open end 0,50 m
36-3600-014	1/80	LED	24V		offenes Ende open end 1,00 m
36-3600-024	1/-	LED	24V		offenes Ende open end 3,50 m
36-3604-004	1/-	LED	24V		P&R 0,50 m
36-3604-014	1/50	LED	24V		P&R 1,00 m
36-3604-024	1/-	LED	24V		P&R 3,50 m



REGPOINT LED

ZUBEHÖR / ACCESSORIES



- 1 ASS1 & ASS2 Verbinder | ASS1 & ASS2 connector**
- (a) 2 pol. weiblich
2 pin female 13-5626-401
 - (b) 2 pol. männlich
2 pin male 13-5625-991
- 2 ASS3 Verbinder | ASS3 connector**
- (a) 3 pol. weiblich
3 pin female 13-0322-281
 - (b) 3 pol. männlich
3 pin male 13-0332-281
- 3 Superseal Verbinder | Superseal connector**
- (a) 2 pol. weiblich
2 pin female 15-7002-044
 - (b) 2 pol. männlich
2 pin male 15-7002-054

- 4 Deutsch Verbinder | Deutsch connector**
- (a) 2 pol. weiblich
2 pin female 15-7002-135
 - (b) 2 pol. männlich
2 pin male 15-7002-125
- 5 für P&R Verbinder | for P&R connector**
- (a) Verschlusskappen
caps 15-5971-014
 - (b) Endkappen rund
end caps round 15-5983-024
 - (c) Endkappen eckig
end caps square 15-5729-014

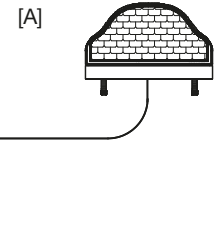
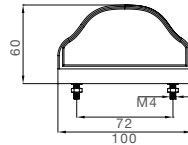
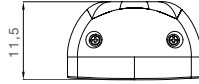




REGPOINT

ADR
Zone 2

IP 54



Kennzeichenlicht
Number plate light

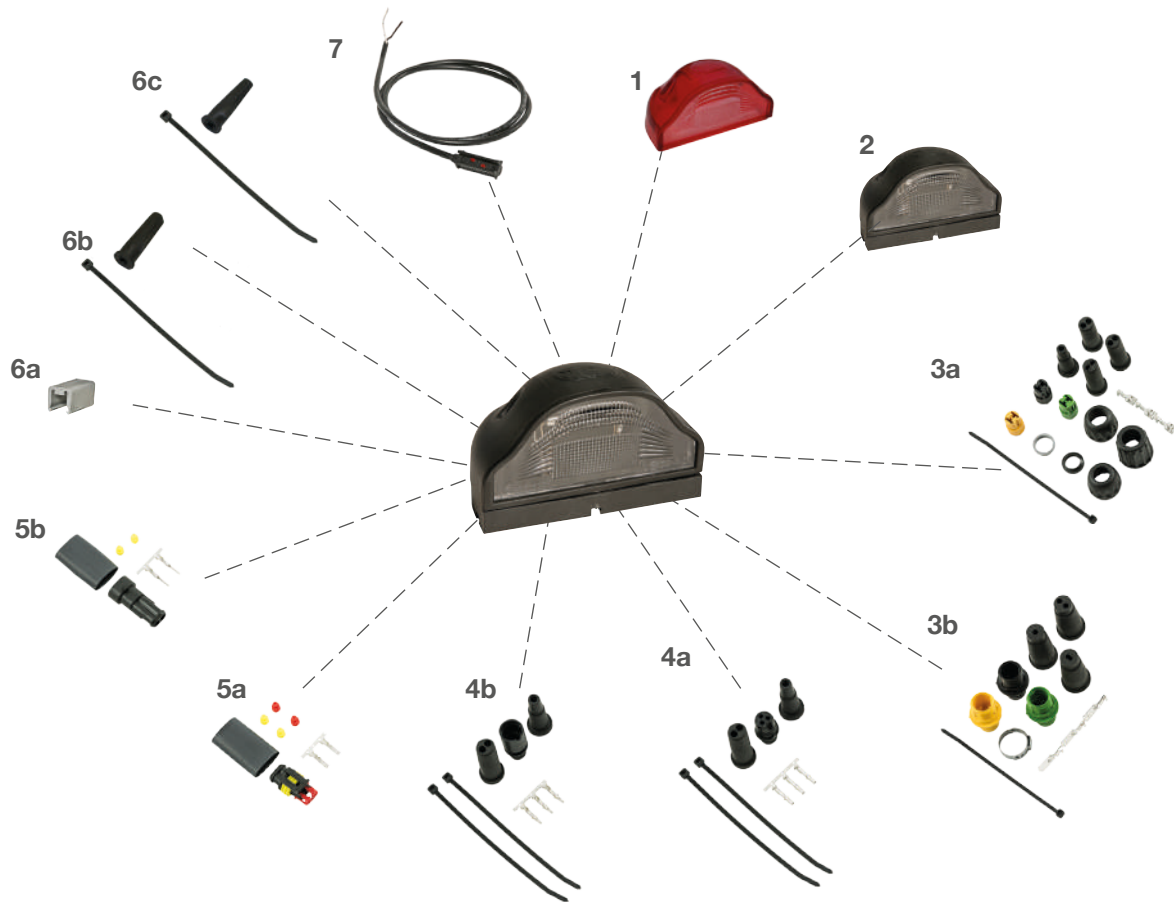
Kennzeichen-
leuchte
Number Plate
Lamp

BEST. NR				ZUSATZ	ANSCHLUSS	
PART NO				ADD ON	CONNECTOR	
36-3002-014	1/-		24V		offenes Ende open end	1,00 m
36-3003-014	1/-		24V		offenes Ende open end	0,30 m
36-3004-014	1/50		24V	M4x16	P&R	0,50 m
36-3004-024	1/-		24V		P&R	1,00 m
36-3004-034	1/50		24V		P&R	1,50 m
36-3004-044	1/-		24V		P&R	2,00 m
36-3004-054	1/50		24V		P&R	3,50 m
36-3007-284	1/50		24V		2 pol. ASS2 2 pin ASS2	0,55 m
36-3007-254	1/50		24V		2 pol. ASS2 2 pin ASS2	1,20 m
36-3007-084	1/-		24V		2 pol. ASS2 2 pin ASS2	3,50 m
36-3007-394	1/-		24V	M4x16	3 pol. ASS3 3 pin ASS3	0,50 m
36-3007-464	1/-		24V	M4x35	3 pol. ASS3 3 pin ASS3	0,50 m
36-3007-264	1/-		24V	[A]	2 pol. ASS2 2 pin ASS2 2 pol. ASS2 2 pin ASS2	1,02 m 0,2 m
36-3000-134	1/-		24V		2 pol. Superseal 2 pin Superseal	1,20 m
36-3007-574	1/60		24V		2 pol. ASS2 2 pin ASS2	0,70 m



REGPOINT

ZUBEHÖR / ACCESSORIES



1 **Lichtscheibe | lens**
transparent rot
transparent red 18-8630-104

2 **Ersatzteileuchte | spare part lamp**
weiß mit Schrauben
white with screws 26-3000-004

3 **ASS1 & ASS2 Verbinder | ASS1 & ASS2 connector**
(a) 2 pol. weiblich
2 pin female 13-5626-401
(b) 2 pol. männlich
2 pin male 13-5625-991

4 **ASS3 Verbinder | ASS3 connector**
(a) 3 pol. weiblich
3 pin female 13-0322-281
(b) 3 pol. männlich
3 pin male 13-0332-281

5 **Superseal Verbinder | Superseal connector**
(a) 2 pol. weiblich
2 pin female 15-7002-044
(b) 2 pol. männlich
2 pin male 15-7002-054

6 **für P&R Verbinder | for P&R connector**
(a) Verschlusskappen
caps 15-5971-014
(b) Endkappen rund
end caps round 15-5983-024
(c) Endkappen eckig
end caps square 15-5729-014

7 **Zuleitung P&R | front connection P&R**
0,5 m 68-5000-574
1,5 m 68-5000-604
2,0 m 68-5000-624
5,0 m 68-5000-634

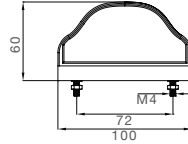
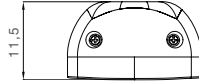




REGPOINT rot
red

ADR
Zone 2

IP 54



Kennzeichenlicht
Number plate light

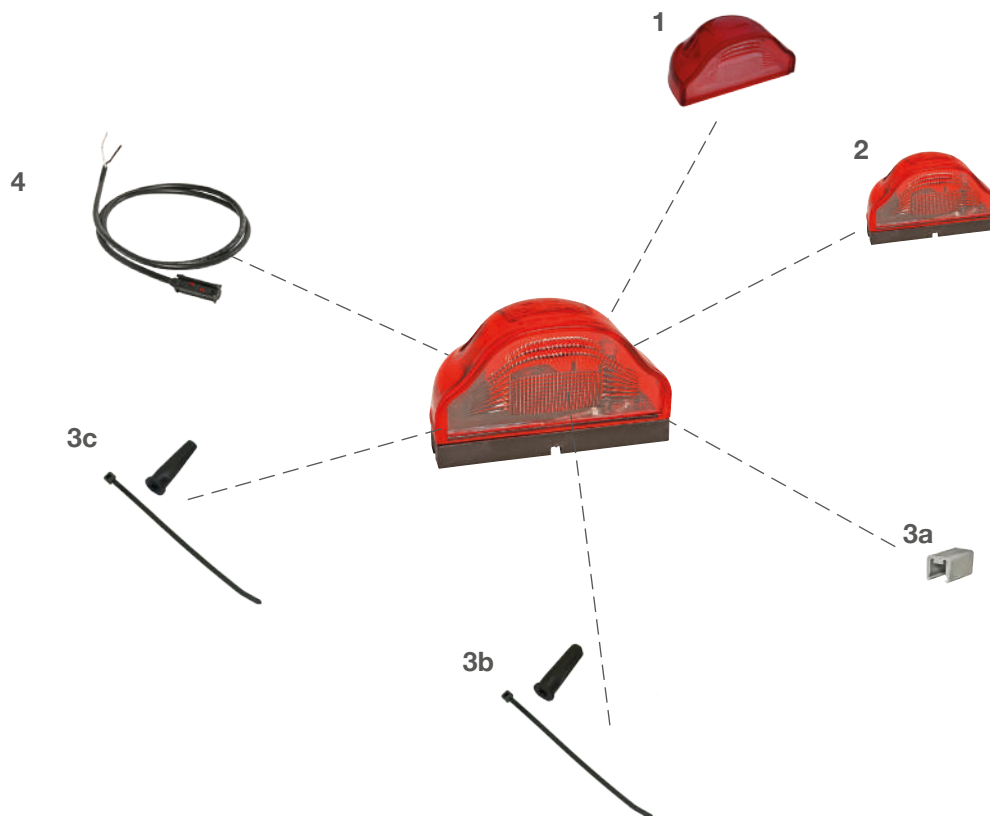
BEST. NR				ZUSATZ	ANSCHLUSS		
PART NO				ADD ON	CONNECTOR		
36-3004-184	1/-		24V		P&R		0,50 m
36-3004-084	1/-		24V		P&R		1,50 m





REGPOINT rot
red

ZUBEHÖR / ACCESSORIES



1 Lichtscheibe | lens
transparent rot
transparent red 18-8630-104

2 Ersatzteileuchte |
spare part lamp
rot mit Schrauben
red with screws..... 26-3010-004

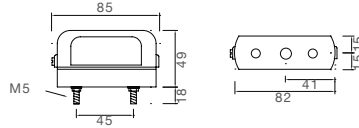
3 für P&R Verbinder |
for P&R connector
(a) Verschlusskappen
caps..... 15-5971-014
(b) Endkappen rund
end caps round..... 15-5983-024
(c) Endkappen eckig
end caps square 15-5729-014

4 Zuleitung P&R | front connection P&R
0,5 m..... 68-5000-574
1,5 m..... 68-5000-604
2,0 m..... 68-5000-624
5,0 m..... 68-5000-634





REGPOINT klein
small



Kennzeichen-
leuchte
Number Plate
Lamp



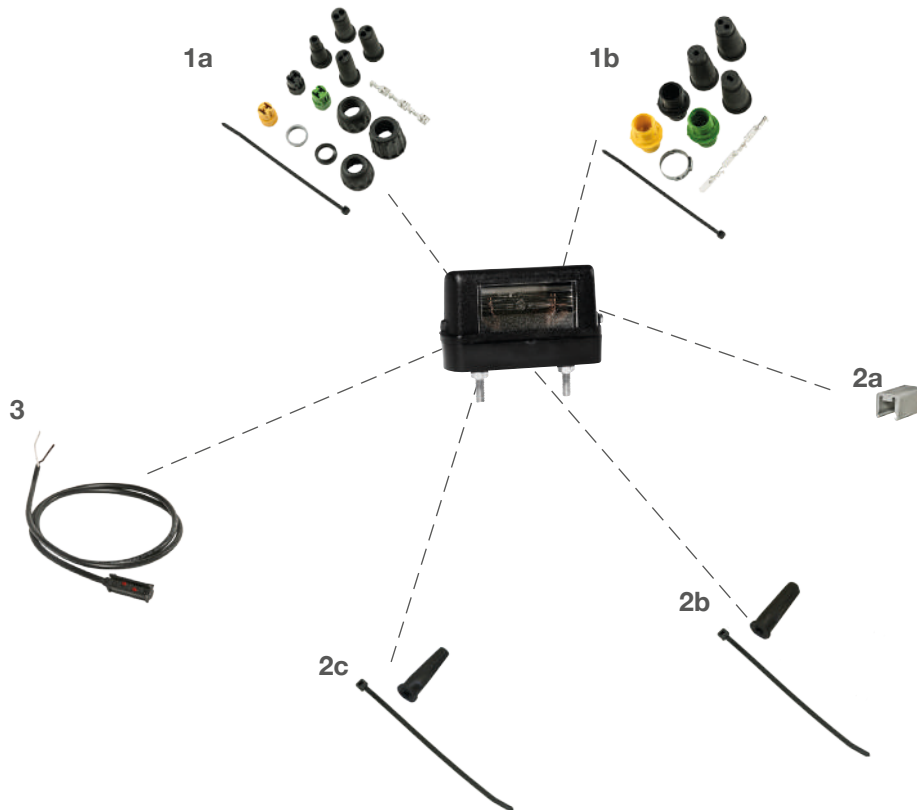
Kennzeichenlicht
Number plate light

BEST. NR				ZUSATZ	ANSCHLUSS
PART NO				ADD ON	CONNECTOR
26-1200-004	1/-	-			Tülleneingang grommet
36-1204-034	1/15		24V		P&R 0,50 m
36-1207-004	1/-		24V		2 pol. ASS2 2 pin ASS2 1,50 m



REGPOINT klein
small

ZUBEHÖR / ACCESSORIES



1 ASS1 & ASS2 Verbinder |
ASS1 & ASS2 connector

- (a) 2 pol. weiblich
2 pin female 13-5626-401
- (b) 2 pol. männlich
2 pin male 13-5625-991

2 für P&R Verbinder |
for P&R connector

- (a) Verschlusskappen
caps 15-5971-014
- (b) Endkappen rund
end caps round 15-5983-024
- (c) Endkappen eckig
end caps square 15-5729-014

3 Zuleitung P&R | front connection P&R
0,5 m 68-5000-574

